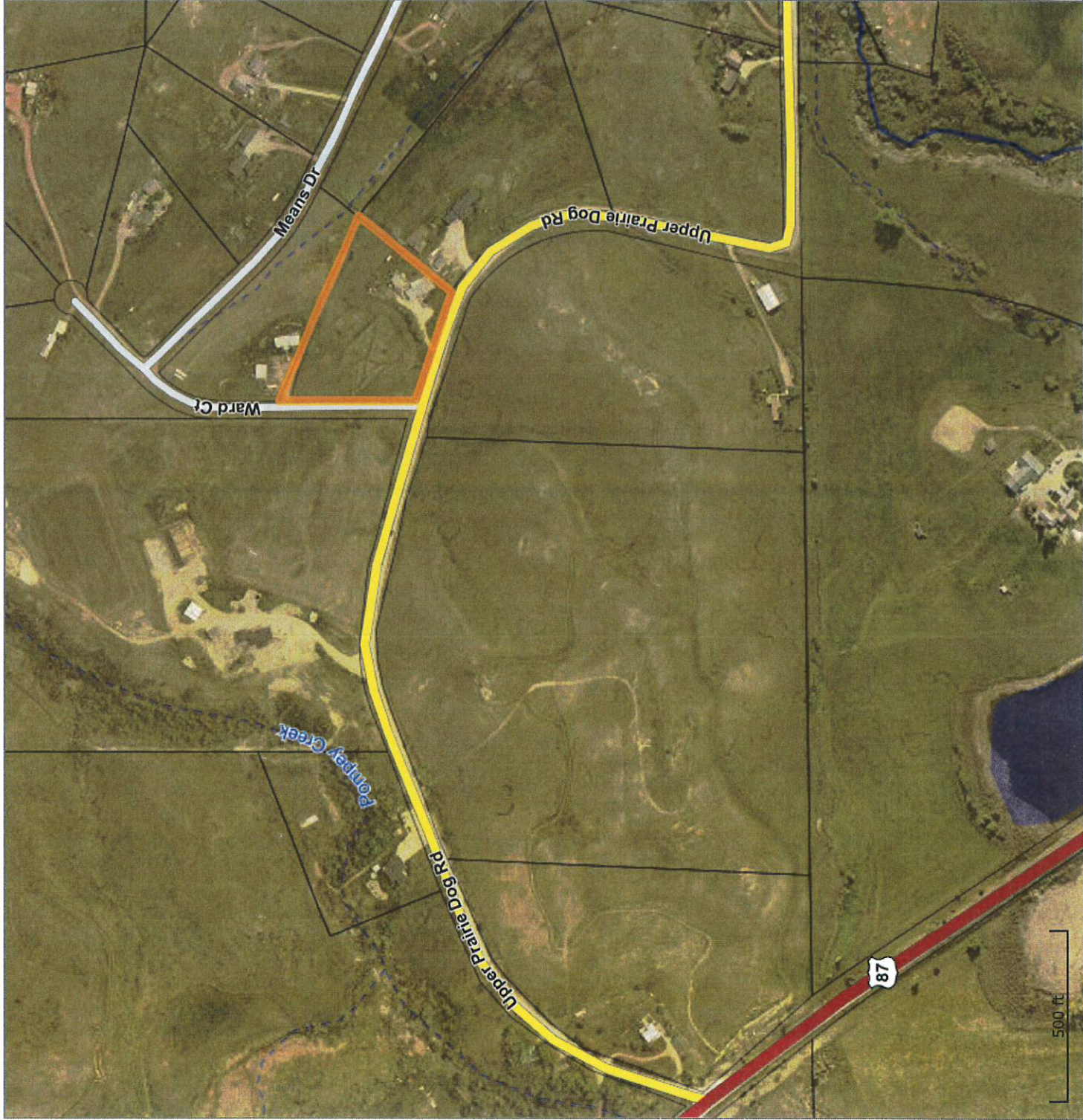


# Sheridan County Wyoming MapServer

40 Upper Prairie Dog Road

//



- River, Creeks, Lakes
- 2023 Aerial, Hi-Res, Limited Areas
- B.L.M.
- Department of Defence
- Local Government
- Other Federal Land
- U.S.F.S.
- State of Wyoming
- U.S. Highway
- State Highway
- County Road
- Other Roads
- Railroad
- Municipal Corporate Limits



Sheridan County provides this map for illustrative purposes only and assumes no liability for actions taken by users based on information shown.  
printed 1/23/2025

500 ft